



## Siser® Craft Heat Press



MODEL CP912-240  
OPERATOR'S MANUAL

HEAT-PRESS

**SISER S.r.l.**

Viale della Tecnica, 18  
36100 VICENZA, ITALY  
tel. +39 0444 287960  
fax +39 0444 287959

**info@siser.it - www.siser.com**

CRAFT HEAT PRESS Manual for use and maintenance

This manual is the property of SISER S.r.l., any even partial reproduction is forbidden



Reproduction, memorization and transmission of all and parts of this publication are prohibited in any form without the prior written authorization and consent of **SISER S.r.l.**

**SISER S.r.l.**, with its policy of constant improvement and development of its products, reserves the right to alter the specifications, equipment and instructions for use and maintenance at any time and without notice.

## INDEX

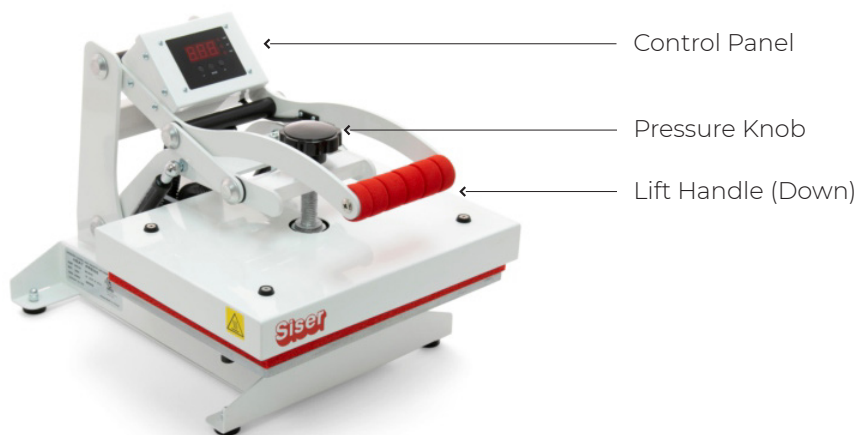
Safety precautions	4
1. Part identification	5
2. Initial setup	6
3. Adjusting temperature, time and pressure	7
4. Applying with your craft press	9
5. Terms of guarantee	10
5.1 Warranty policy	
5.2 Liability	
5.3 Ce - certification - reference standards	
6. Retiring the machine, demolition and disposal	11

## Safety Precautions

**When using your heat press, basic precautions should always be followed, including the following:**

1. Read all instructions.
2. Use heat press only for its intended use.
3. To reduce the risk of electric shock, do not immerse the heat press in water or other liquids.
4. Never pull cord to disconnect from outlet, instead, grasp plug and pull to disconnect.
5. Do not allow cord to touch hot surfaces, allow heat press to cool completely before storing.
6. Do not operate heat press with a damaged cord or if the equipment has been dropped or damaged. To reduce the risk of electric shock, do not disassemble or attempt to repair the heat press. Take it to a qualified service person for examination and repair. Incorrect assembly or repair could increase the risk of fire, electric shock, or injury to persons when equipment is used.
7. This appliance is not intended for use by persons (including children) with reduced physical, sensory, or mental capabilities, or lack of experience and knowledge, unless they have been given supervision or instruction concerning use of the appliance by a person responsible for their safety.
8. Close supervision is necessary for any heat press being used by or near children. Do not leave equipment unattended while connected.
9. Burns can occur when touching hot metal parts.
10. To reduce the likelihood of circuit overload, do not operate other high voltage equipment on the same circuit.
11. If an extension cord is necessary, then a 10 amperage rated cord should be used. Cords rated for less amperage may overheat. Care should be taken to arrange the cord so that it cannot be pulled or tripped over.
12. Never take it upon yourself to remove the press instrument box: if problems arise, contact our specialist person directly during normal working hours on +39 0444 287960. Opening the instrument box of your own accord causes all rights to warranty to become void.

## 1. Part Identification



## 2. Initial Setup

### General Guidelines:

- To avoid burns, do not touch the heated platen during use.
- Keep hands clear of the upper platen of the press during lock down as the pressure may cause injury.
- Press should be placed on a sturdy, suitable stand at least 92 cm L x 61 cm W x 74 cm H.
- Work area must be kept clean, tidy and free of obstructions.

### Carefully follow the step-by-step instructions for best results.

1. Failure to comply with the instructions relative to installation, use and maintenance as described in this manual.
2. System and environmental conditions that are not conducive for the machine to perform.
3. Unauthorized alterations to the machine.
4. Operation by unqualified and untrained personnel.

### CAUTION! Failure to follow these instructions will cause:

1. Erratic controller functions.
2. Inaccurate displays and slow heat-up.
3. The circuit breaker to disengage.

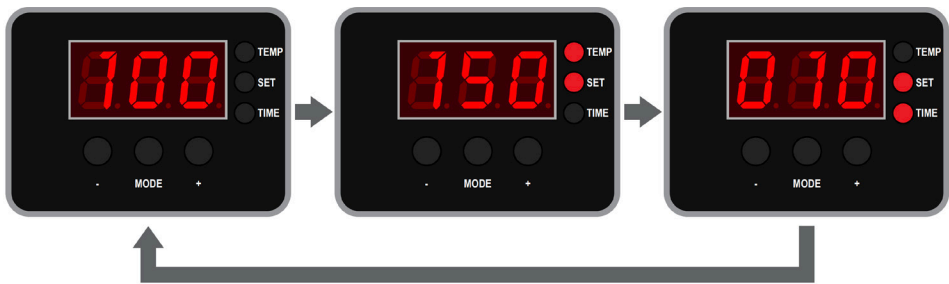
### 3. Adjusting Temperature, Time and Pressure

Recommended settings vary based on the garment material and type of transfer product used.

Please consult the instructions or specifications that came with your transfer product for appropriate temperature and time settings

With the press ON and the Lift Handle in the UP position, press the MODE button to cycle through setup modes:

- Displays current temperature (C°)
- Ready to Print
- Displays print temperature
- Increase using (+) button
- Decrease using (-) button
- Displays print time (sec)
- Increase using (+) button
- Decrease using (-) button



Various transfer products will recommend using either “light”, “medium” or “heavy” pressure. Some trial and error may be required to determine the best pressure setting, but once selected, your craft press will reliably reproduce the same pressure, print after print.

With the Lift Handle in the DOWN position, rotate the patented Over-the-Center Pressure Adjustment Knob.



- Rotate clockwise to increase pressure
- Rotate counter-clockwise to decrease pressure
- Remember to allow for the thickness of your garment when adjusting pressure.
- **WARNING:** Structural damage caused by excessive pressure is NOT covered under the limited warranty.



## 4. Applying with your Craft Press



Once the Craft Press has reached the designated temperature, position the garment.



Align the transfer material on the garment to be printed and cover with a cover sheet.



Lower and lock the heat platen into the press position. The automatic timing process will start.



The timer will count down and audibly signal you to lift the heat platen into the UP position when the press cycle is complete. The time will automatically reset and you are ready to continue with the next application.

## 5. TERMS OF GUARANTEE

### 5.1 Warranty policy



**SISER S.r.l.** guarantees its **SISER CRAFT HEAT PRESS** machine for a period of 24 months from the date of shipment.

The warranty will only be recognised if the machine was used correctly following the instructions given in this manual.

During the warranty period, any defective or broken parts will be repaired or replaced free of charge by SISER S.r.l. on its premises in Vicenza.

Any defective parts replaced must be returned to Siser S.r.l. after replacement.

The purchaser assumes all transport or delivery charges of the spare parts

All consumables and materials used for routine maintenance are excluded from the warranty, as well as any parts damaged due to improper use of the machine.

Repairs and/or replacements made during the warranty period do not extend the warranty.

### 5.2 Liability



The only configurations and uses allowed by the manufacturer are those expressly described in the manual.

SISER S.r.l. assumes no liability for:

- failure to comply with the instructions relative to installation, use and maintenance as described in this manual;
- system and environmental conditions that are not conducive for the machine to perform;
- unauthorized alterations to the machine;
- operation by unqualified and untrained personnel.

### 5.3 CE - CERTIFICATION - Reference standards

The SISER CRAFT HEAT PRESS machine is equipped with electrical parts operating at a voltage ranging between 50 V and 1000 V alternating current, and is subject to the Low Voltage Directive 2014/35/EU and the Electromagnetic Compatibility Directive 2014/30/EU.

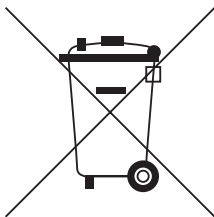
Users must remember that in addition to following the instructions in this manual, the legislation on the subject of safety within your country must also be adhered to.

## 6. RETIRING THE MACHINE, DEMOLITION AND DISPOSAL

If the machine has to be demolished, it must be separated into similar parts, which must be separately disposed of in accordance with legislation in force. The replaced parts must not be disposed of in the environment, but disposed of according to legislation in force in the location of machine use.

The basic components of the machine parts are steel, stone wool, aluminium and plastic.

The symbol



depicted on the machine means the waste is subject to “separate collection”. Therefore, the user must take (or have taken) the waste material to a waste sorting facility run by local municipalities, or return it to the retailer on purchase of a new, equivalent machine.

In Italy, illegal disposal of the product by the user is subject to a fine pursuant to Art. 255 and thereafter of Legislative Decree no. 152/06.

### Information for the users

Separate collection of this machine at the end of its life is organized and managed by the manufacturer. The user who wishes to dispose of this equipment should therefore contact the manufacturer and follow the instructions adopted by the latter to ensure separate collection of the machine at the end of its life.

Correct separate collection for recycling, treatment and environmentally compatible disposal of waste material contributes to the prevention of possible negative effects on health and the environment, and facilitates the reuse and/or recycling of the materials of which it is composed.

Improper disposal of the product by the owner is a punishable violation of the regulations in force.





## Siser® Craft Heat Press

Perfect For Applying HTV Designs to:



T-Shirt



Onesies



Tote Bags



Coasters



Koozies



Kitchen aprons



Mouse Pads



MODEL CP912-240  
OPERATOR'S MANUAL

HEAT-PRESS

### SISER S.r.l.

Viale della Tecnica, 18  
36100 VICENZA, ITALY  
tel. +39 0444 287960  
fax +39 0444 287959

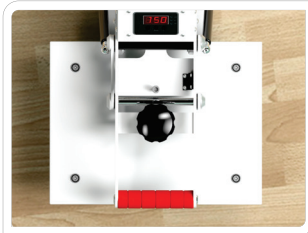
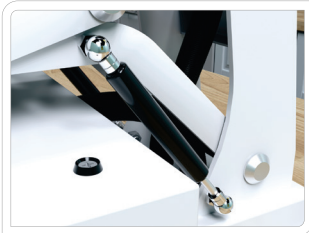
[info@siser.it](mailto:info@siser.it) - [www.siser.com](http://www.siser.com)

CRAFT HEAT PRESS Manual for use and maintenance

This manual is the property of SISER S.r.l., any even partial reproduction is forbidden



## Siser® Craft Heat Press



MODEL CP912-240  
OPERATOR'S MANUAL

HEAT-PRESS

### SISER S.r.l.

Viale della Tecnica, 18  
36100 VICENZA, ITALY  
tel. +39 0444 287960  
fax +39 0444 287959

[info@siser.it](mailto:info@siser.it) - [www.siser.com](http://www.siser.com)